

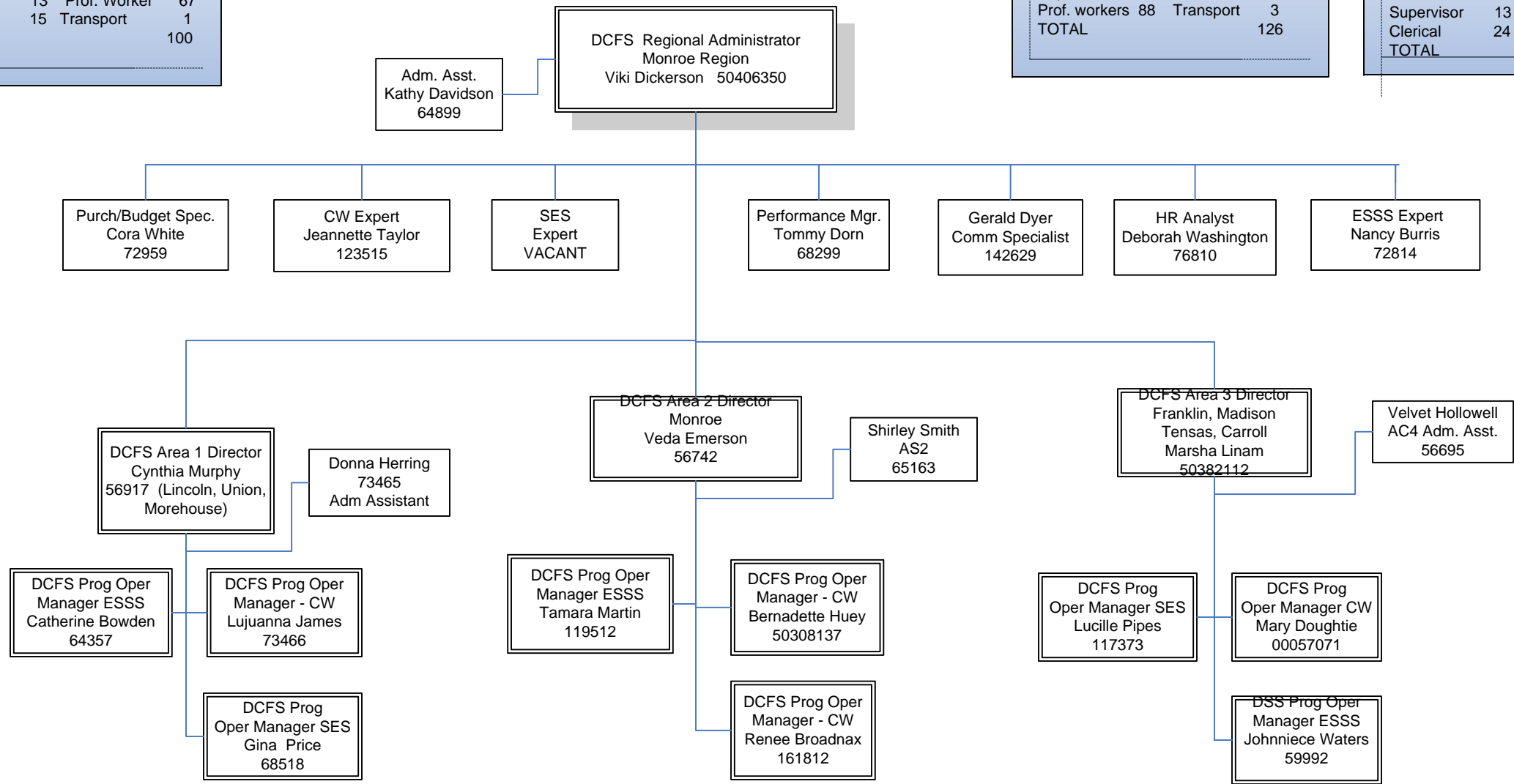
Region 9 - Monroe

August 18, 2010

AREA 1 – Lincoln, Union, Morehouse, SES M			
Director	1	Manager	3
Supervisor	13	Prof. Worker	67
Clerical	15	Transport	1
TOTAL			100

Area 2 – Monroe			
Director	1	Manager	3
Supervisor	16	Clerical	15
Prof. workers	88	Transport	3
TOTAL			126

Area 3 – Richland, Madison, Tensas W. Carroll			
Director	1	Manager	3
Supervisor	13	Prof. Worker	67
Clerical	24	Driver	4
TOTAL			112

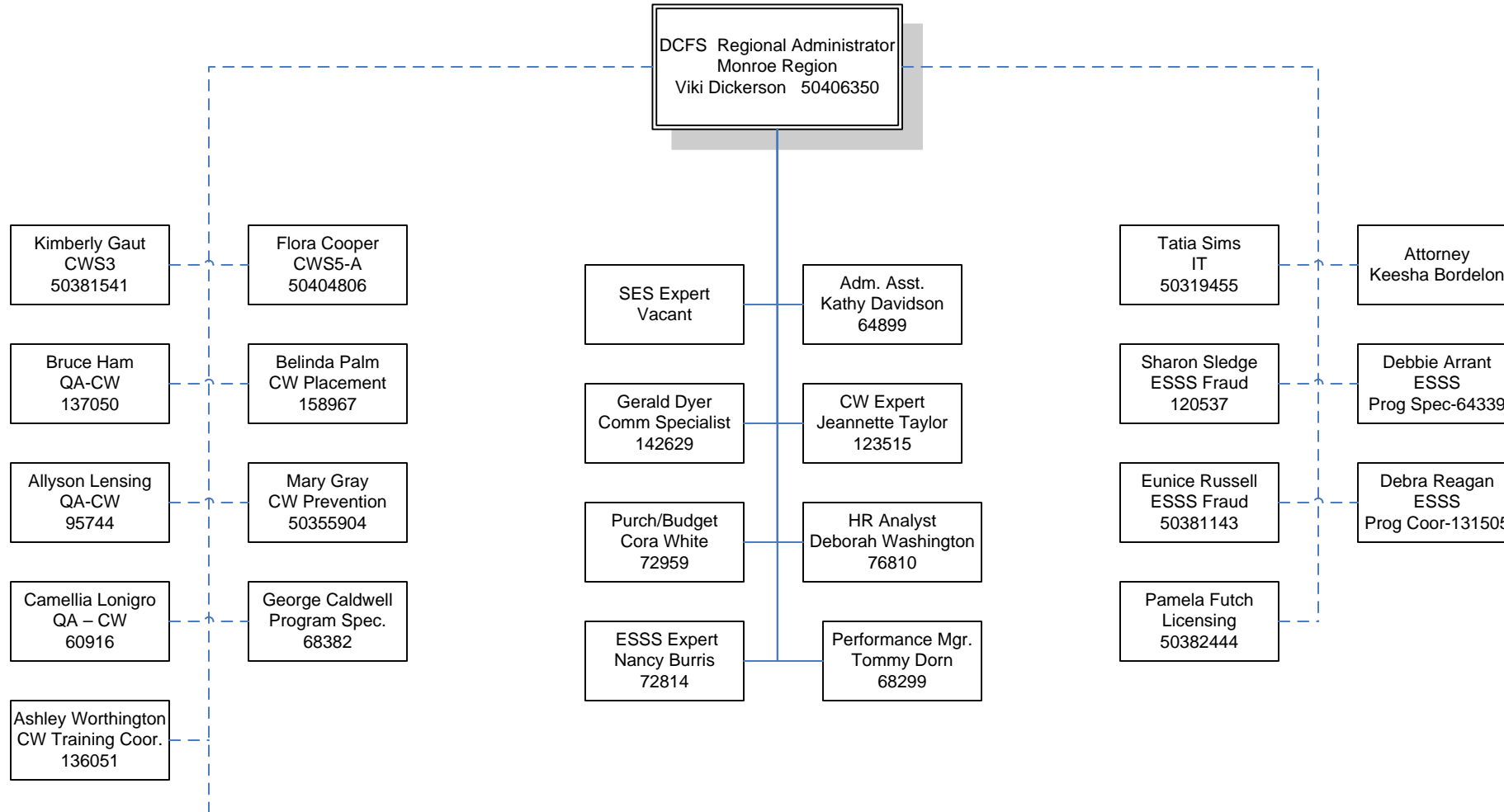


Monroe Region

Monroe Regional Office

July 12, 2010

Page 1



Monroe Region

Area 1 (Lincoln, Union Morehouse, SES M)

July 12, 2010

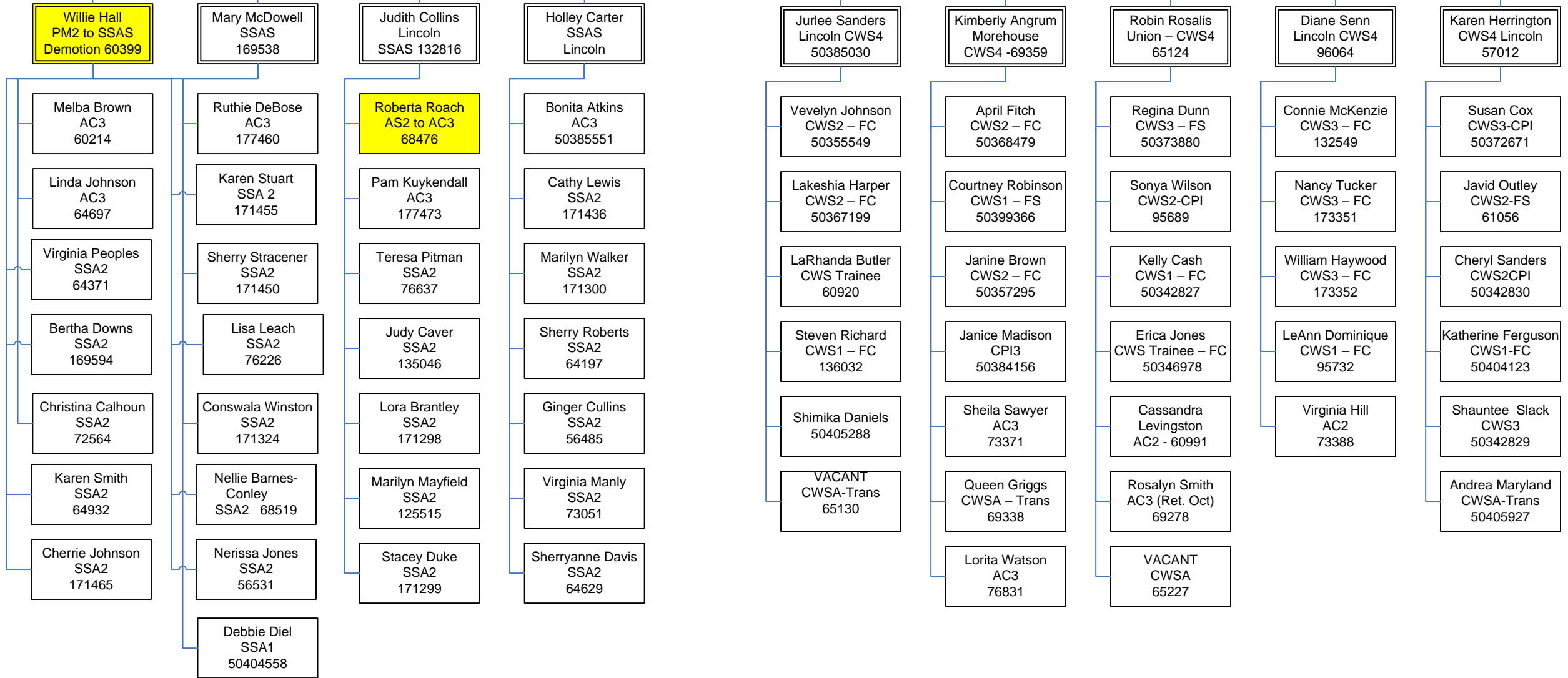
Page 1

Cynthia Murphy
FS Regional Adm
(Area 1 Director)
56917

Donna Herring
Admin. Asst. 4
73465

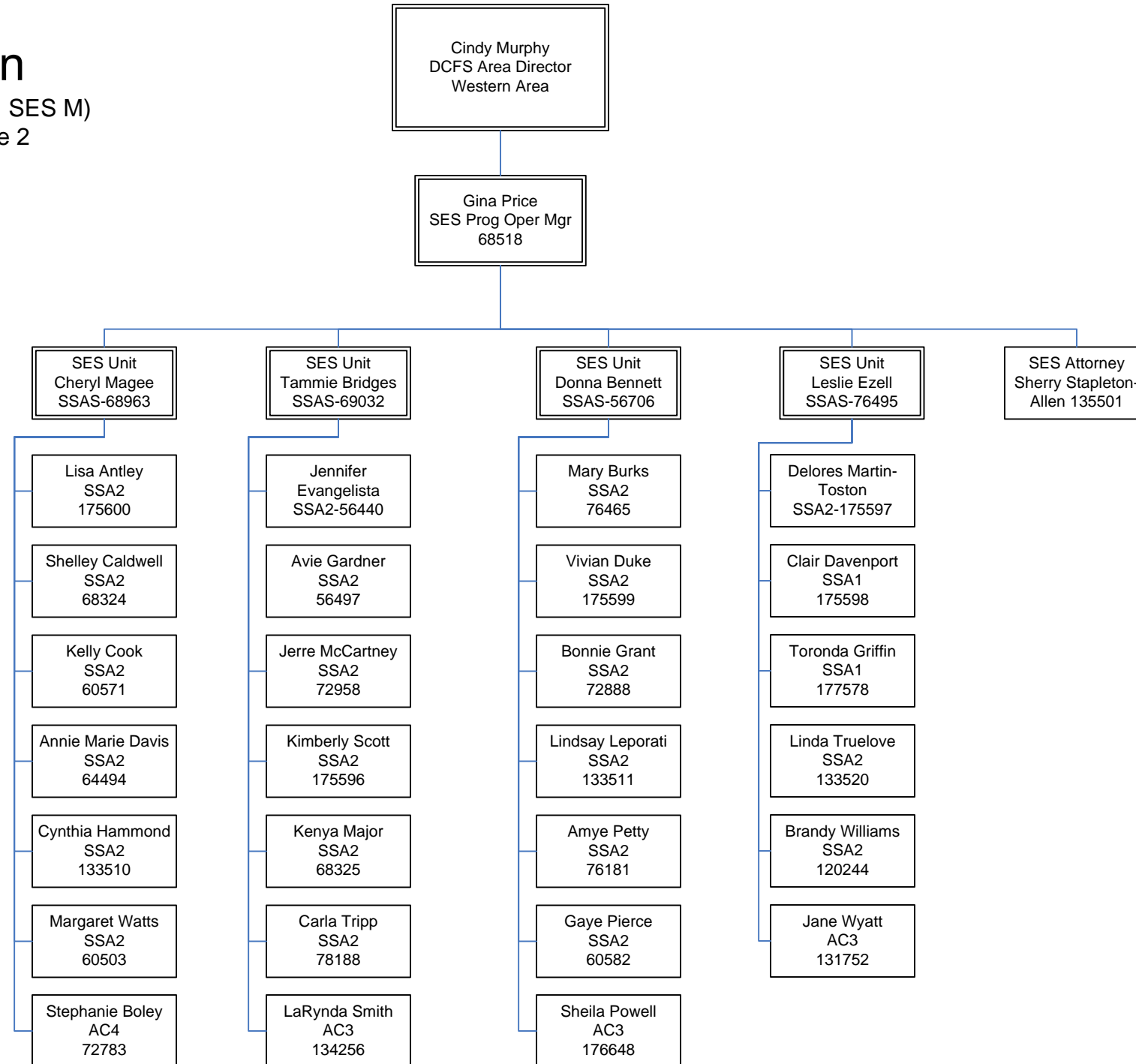
Catherine Bowden
(FSPM2)
ESSS Prog Oper Mgr
64357

Lujuanna JamesCW
Program Ops Mgr.
73466



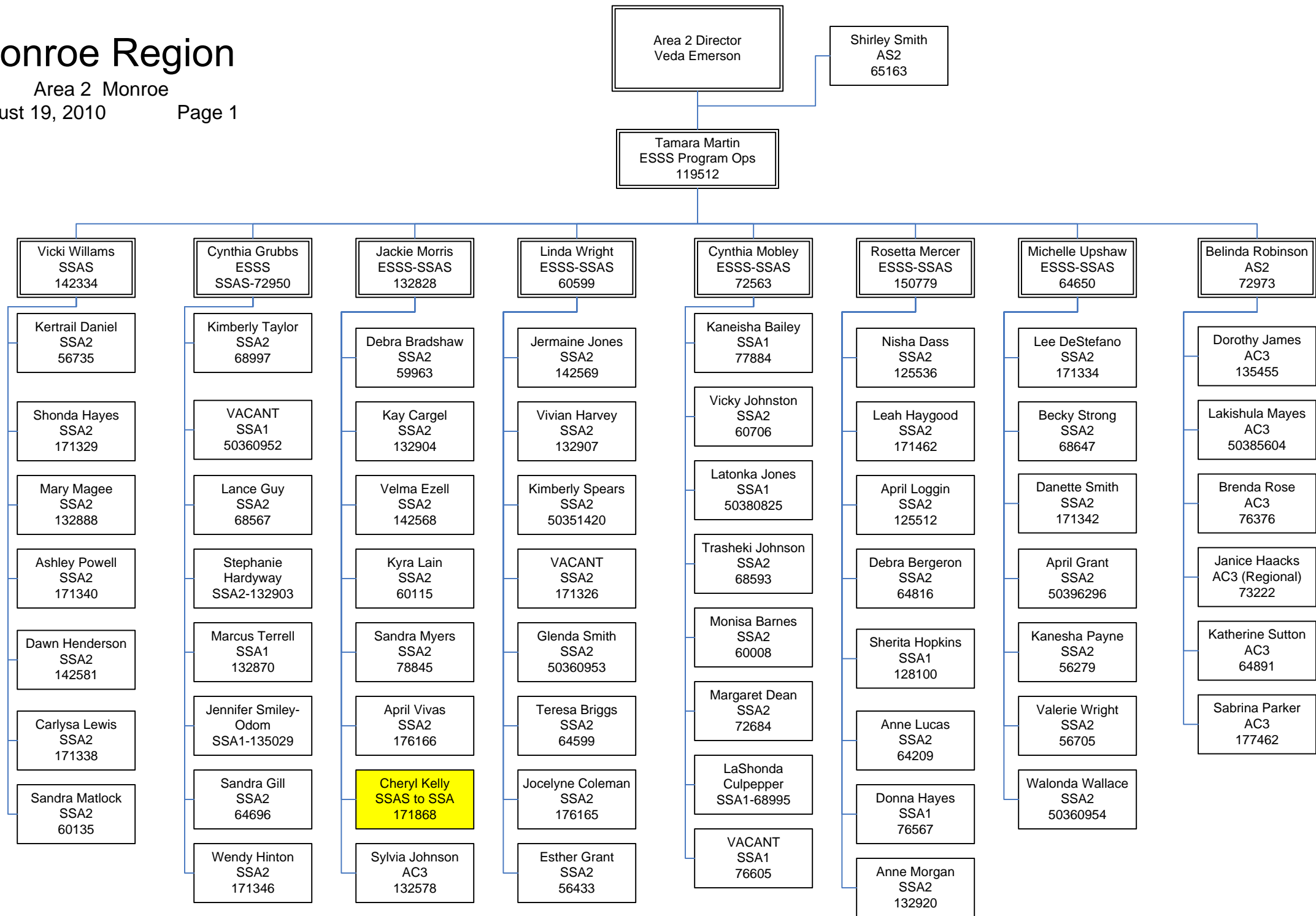
Monroe Region

Area 1 (Lincoln, Union Morehouse, SES M)
August 19, 2010 Page 2



Monroe Region

Area 2 Monroe
August 19, 2010 Page 1

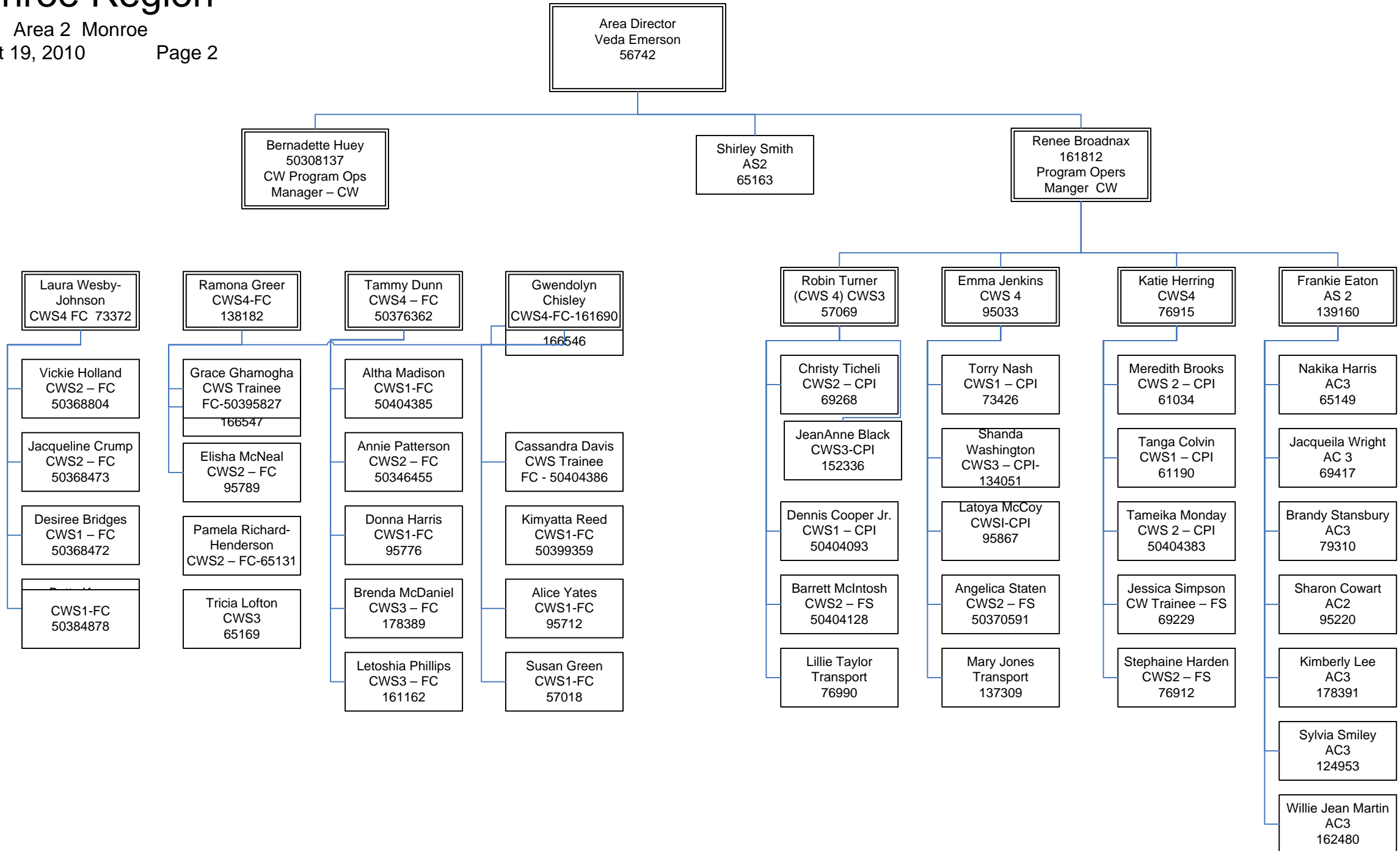


Monroe Region

Area 2 Monroe

August 19, 2010

Page 2

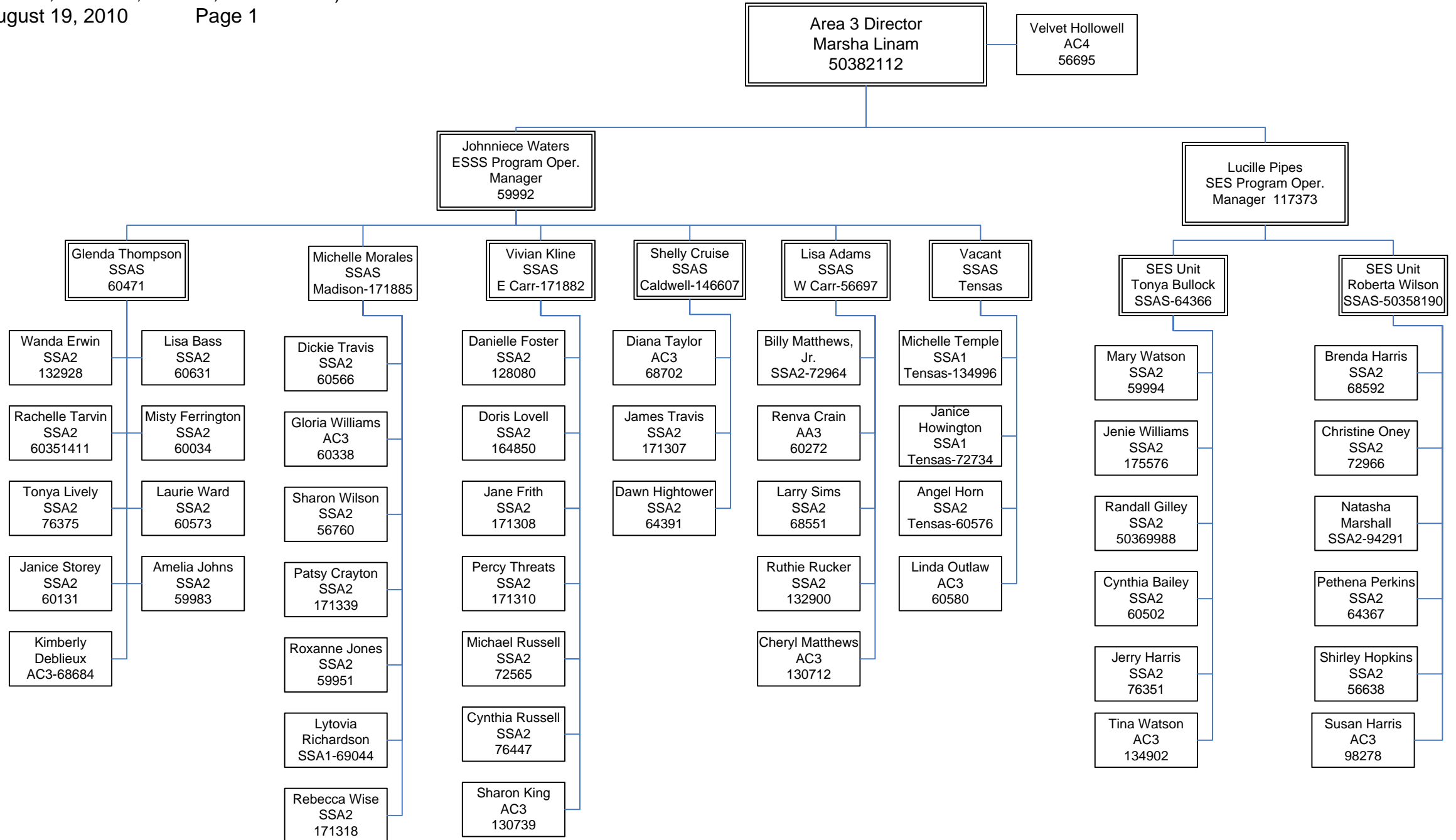


Monroe Region

Area 3 (Richland, Madison, Tensas, West Carroll)

August 19, 2010

Page 1



Monroe Region

Area 3 (Richland, Madison, Tensas, West Carroll)
August 19, 2010 Page 2

