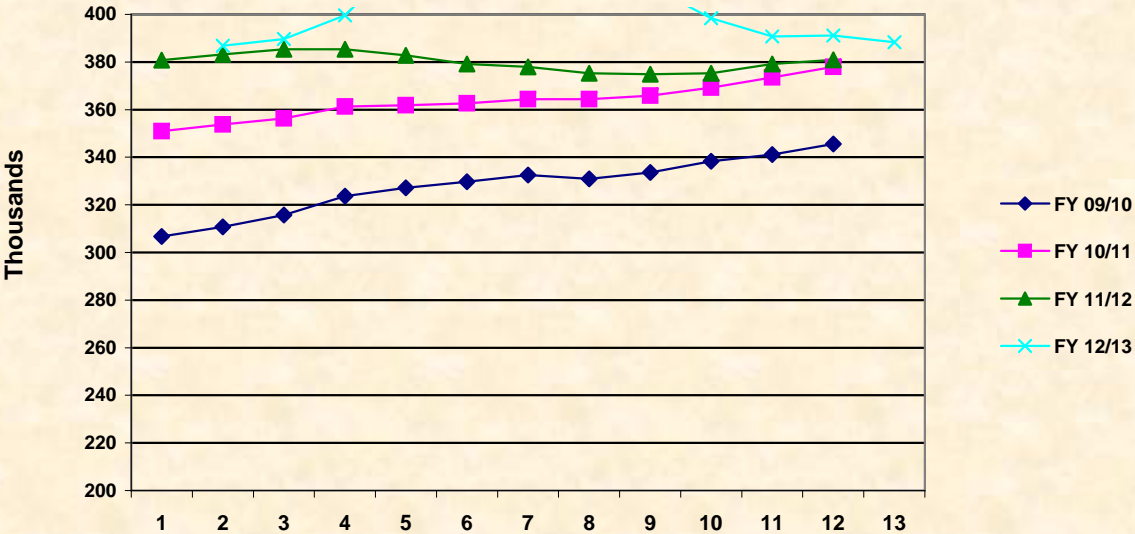


SNAP CASES BY FISCAL YEAR
STATEWIDE MONTHLY TOTALS

MONTH	FY 06/07	FY 07/08	FY 08/09	FY 09/10	FY 10/11	FY 11/12	FY 12/13
JUL	241,815	255,713	260,236	306,724	350,974	380,835	386,867
AUG	246,449	259,973	264,278	310,756	353,701	383,252	389,595
SEP	250,204	260,642	270,954	315,723	356,356	385,308	399,563
OCT	253,469	263,587	284,244	323,657	361,226	385,390	424,520
NOV	246,164	264,036	280,802	327,171	361,782	382,815	431,345
DEC	243,849	261,399	279,782	329,639	362,658	379,138	422,905
JAN	243,908	259,798	279,249	332,486	364,425	377,950	418,522
FEB	245,866	259,160	276,637	330,931	364,392	375,275	411,684
MAR	251,351	258,574	278,111	333,592	365,881	374,888	398,433
APR	253,576	257,209	284,410	338,347	369,168	375,225	390,707
MAY	260,957	258,019	290,595	341,065	373,482	379,130	391,122
JUN	254,513	259,132	298,374	345,594	377,998	380,922	388,357
Average	249,343	259,770	278,973	327,974	363,504	380,011	404,468
Totals	2,992,121	3,117,242	3,347,672	3,935,685	4,362,043	4,560,128	4,853,620

SNAP CASES BY STATE FISCAL YEAR Statewide Monthly Totals



SNAP RECIPIENTS BY FISCAL YEAR

STATEWIDE MONTHLY TOTALS

MONTH	FY 06/07	FY 07/08	FY 08/09	FY 09/10	FY 10/11	FY 11/12	FY 12/13
JUL	599,958	615,125	630,644	736,852	822,806	873,448	878,300
AUG	612,560	639,945	639,945	743,394	826,933	876,191	882,142
SEP	621,996	635,525	645,599	754,465	831,991	879,609	903,796
OCT	629,995	642,999	687,571	772,873	840,963	879,345	954,593
NOV	611,971	643,621	676,108	780,000	839,513	873,176	966,312
DEC	604,611	636,432	673,548	785,437	840,500	865,281	945,076
JAN	610,031	631,442	670,554	789,887	841,894	861,849	935,580
FEB	601,512	629,503	661,918	782,690	839,218	853,058	920,378
MAR	616,057	628,541	668,066	788,018	842,465	851,563	891,690
APR	620,234	624,857	684,670	798,982	850,887	852,853	873,031
MAY	639,029	625,726	699,720	804,200	859,853	862,497	874,070
JUN	618,793	628,129	718,361	813,907	869,232	867,152	868,893
Average	615,562	631,820	671,392	779,225	842,188	866,335	907,822
Totals	7,386,747	7,581,845	8,056,704	9,350,705	10,106,255	10,396,022	10,893,861

SNAP RECIPIENTS BY STATE FISCAL YEAR Statewide Monthly Totals

